



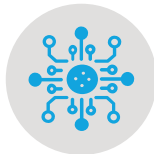
## Who We Are

### Location



Italian-based  
company with **3  
offices in Europe**  
**1 office in  
North America**

### Solutions



We design  
and produce **linen  
management  
technology** optimized  
for hospitals  
and laundries

### Global Presence



More than **700  
installations**  
across  
**23 countries**

### Innovation



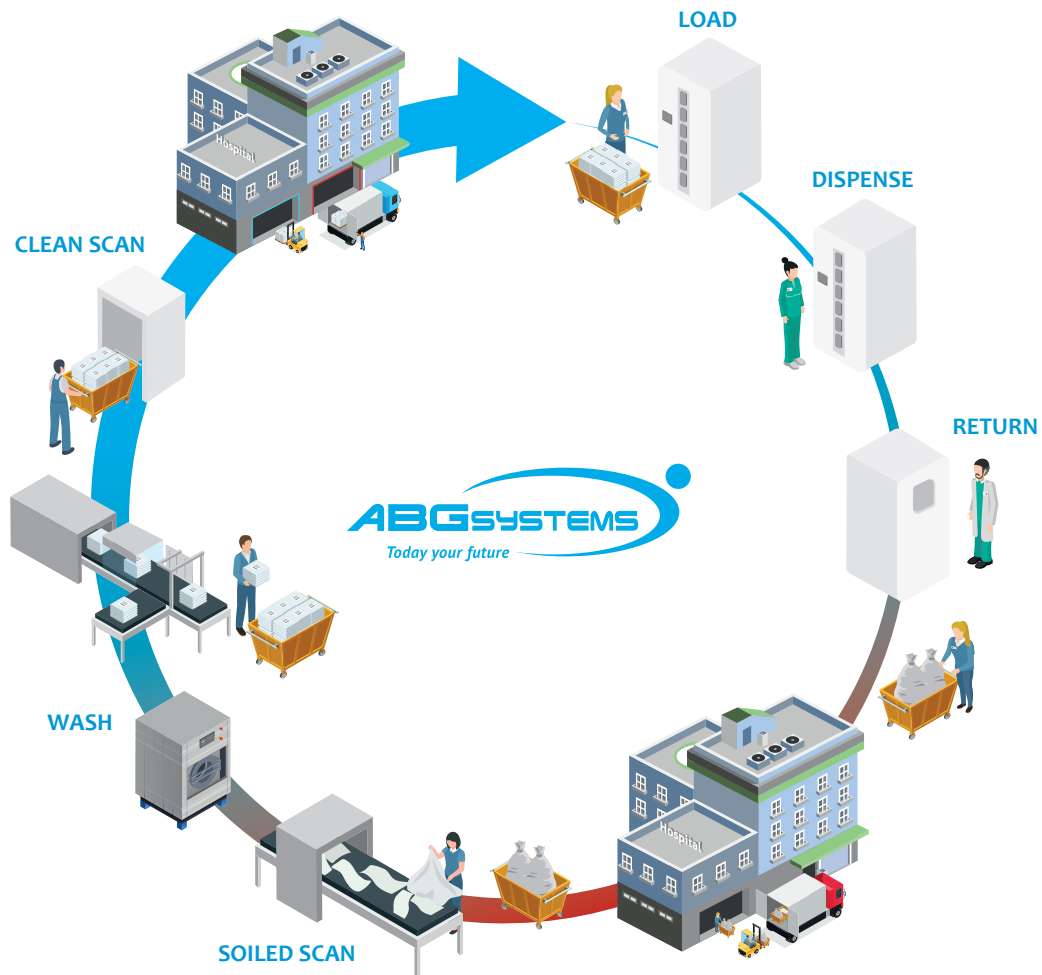
**Innovative  
company** with  
a persistent  
focus on  
**improving quality  
and design**

Founded in Italy in 2007, ABG Systems has quickly grown into a global leading provider of automated textile dispensing and tracking systems. Our primary objective is to help laundries and hospitals generate cost savings by optimizing the efficiency and transparency of the textile logistic process through RFid automation and tracking.

We are proud to offer our solutions to the U.S industrial laundry market in partnership with R.W. Martin, industrial laundry machinery specialists. Together, ABG Systems and R.W. Martin are equipped to offer best-in-class products, service, and support to our valued customers.

## Why ABG Systems?

### An Integrated Dispensing and Tracking Solution



We are pioneers of a new scrub management concept. By leveraging RFID technology, our system not only controls and tracks the distribution of scrubs with utmost reliability, but also allows organizations to track their textiles throughout the entire logistic process. From the laundry, to the hospital(s), to the distribution areas, to the users, to the soiled collection basket, and back to the laundry, our solution will help ensure that all textiles are always accounted for!

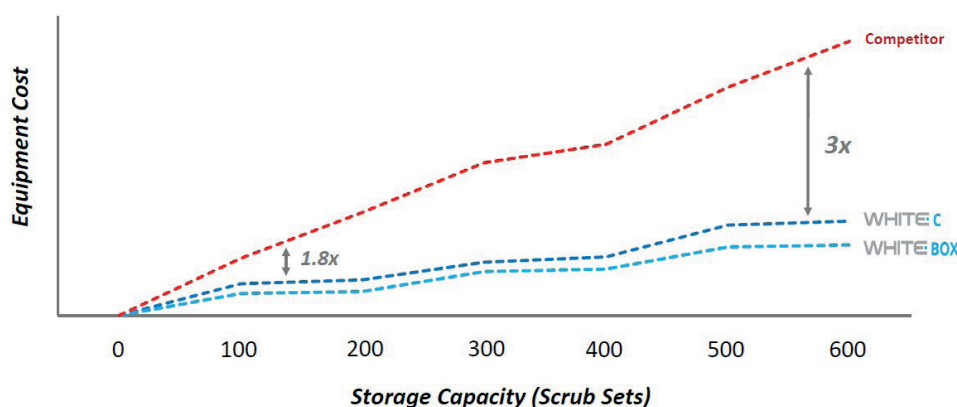
## The RFID Difference

All ABG solutions work with RFID technology. By embedding an RFID chip in every garment, each individual item can be tracked throughout the entire scrub distribution and logistic process. How does an RFID dispensing system compare to a non-RFID dispensing system?

	RFID-BASED DISPENSING AND COLLECTING	NON-RFID DISPENSING AND COLLECTING
What can be dispensed?	Any mix of items can be dispensed from the same machine (scrubs of all colors and sizes, isolation gowns, lab coats, etc.)	Only items with pre-defined holding slots can be dispensed
How are scrubs registered to users when dispensed?	By associating users to an RFID code that is unique to every garment	By associating users to their selected size
How do you know what is returned into the receiving system?	When scrubs are returned, they are scanned to check whether the item that is returned is the same item that was dispensed	Returns are verified with a camera or are based on a honor system. It is difficult to accurately track returns
What kind of reports can you generate?	<ul style="list-style-type: none"> <li>• Since every item is individually tracked, reports will be more detailed</li> </ul>	Since items cannot be individually tracked, reports will be more generic
In what other ways can you leverage the technology?	<p>Once you have a software that integrates with RFID readers, you can:</p> <ul style="list-style-type: none"> <li>• Track stockroom inventory</li> <li>• Integrate other items into your dispensing/tracking process</li> <li>• Integrate with your laundry's RFID ERP system</li> <li>• Scan any item to view history</li> </ul>	n/a

## Flexibility and Modularity

To help us meet the unique preferences and requirements of different healthcare organizations, each of our dispensing solutions is available in a variety of sizes and configurations. This distinguishing characteristic enables us to offer the most efficient and cost-effective solutions to our customers.



Thanks to our **scalable model**, a large hospital would require fewer ABG Systems machines than smaller competitor machines to satisfy user demand. Our flexible approach can thus be a source of **significant cost savings** for hospitals.

**White C** is the optimal solution for the controlled and hygienic distribution of uniforms. The machine contains a series of compartments that are large enough to store individual garments or scrub sets. The dedicated uniform compartments help ensure that all uniforms remain sterile until dispensed, making it the perfect solution for the distribution of hospital scrubs.



## FEATURES & BENEFITS

- Highly controlled distribution
- Hygienic distribution
- Credit based system
- Can load individual garments, scrub sets, or any combination of singles and sets
- Interactive messaging system that allows users to communicate with hospital admin
- Sends restocking alerts
- Easy and rapid dispensing
- Easy loading

## HOW IT WORKS

**In the dispensing phase:**

- User scans badge card or enters personal pin for identification
- User will then be prompted to select desired uniform size. If the hospital decides to pre-define user sizes in the ONE management software, the appropriate size will be automatically dispensed upon identification (no selection required). If a user's pre-defined size is not available, the user will be prompted to make a selection from the currently available sizes.
- The rotating cylinder in the machine will bring the required size to the front, and the slot containing the required size will unlock. The blue light located on the left side of each slot will light up to indicate which slot has been unlocked.
- The user retrieves scrubs and closes the slot-door.
- The user loses 1 credit until this specific uniform is returned in the soiled collector.

**Average dispensing time: <5 seconds**

**To load the machine:**

- The operator enables the loading procedure using his/her badge.
- Items or sets are scanned with an RFID reader built into the machine.
- The blue light will indicate where to load the item or set.
- Repeat this process for each item or set.

**Total loading time: 3 seconds per slot**



**White Box** is an automated locker-style dispensing system that is fully customizable for your business: each electrical module can support anywhere from 1-6 locker doors, and each door can be configured with your choice of shelves or hanger kits. White Box can also be used as a combo solution (dispenser and receiver), since any of the locker doors can be configured as dispensing or soiled receiving units. The simplicity of the system makes it the easiest and quickest to use and load with clean scrubs.

## FEATURES & BENEFITS

- Customizable and modular
- Credit based system
- Interactive messaging system that allows users to communicate with hospital admin
- Sends restocking alerts
- Easy and rapid loading
- Easy and rapid dispensing
- Minimal maintenance

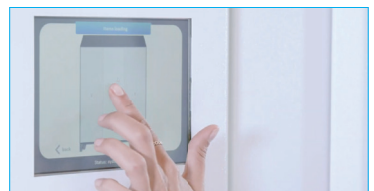


## HOW IT WORKS

### In the dispensing phase:

- User scans badge card or enters personal pin for identification
- User selects desired size
- The locker door containing the selected size will unlock, indicated by a blue light at the top of the door
- The user retrieves the uniform from the designated door, and then closes the door
- Once the door is closed, the embedded RFID readers in the machine will rescan all remaining items
- All missing items will now be registered to the user, and the user will lose credits for the items taken until those specific items are returned in the soiled receiver

Note: Since each user will be assigned credits at the hospital's discretion, if they take more items from the White Box than their credits permit, they will be blocked from retrieving uniforms until the specific items are returned. Therefore, controlled distribution is achieved by limiting user credits.



### To load the machine:

One of the main benefits of the White Box when compared to single slot dispensers is its simple and rapid loading process

- The operator enables the loading procedure using his/her badge
- All doors will unlock
- The operator places stacks of uniforms on their designated shelves
- The operator closes the doors
- Once the doors are closed, the RFID readers in the machine will scan all its contents

**Total loading time: 2-12 minutes (2 minutes per door)**

**White Basket** is the machine used for the collection of soiled garments. The machine contains RFID readers that scan items as they are dropped through the flap-door, so no manual user identification is required. Users simply drop their uniforms through the flap-door and move on with their days – its that simple!



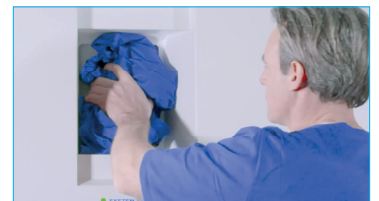
## FEATURES & BENEFITS

- No manual user identification required
- Utmost simplicity
- Automatically returns credit
- Different sizes available
- Alert when nearing capacity

## HOW IT WORKS

### In the soiled collecting phase:

- Users drop soiled items into the machine through the flap-door
- Items are scanned as they are dropped into the machine
- Once scanned, the system will return credits to the user (since the RFID tags on the items were initially registered to this user when they were retrieved from the dispenser, the credits will be automatically returned to this user)



### Total collecting time: 1-2 seconds

### To empty the machine:

One of the main benefits of the White Box when compared to single slot dispensers is its simple and rapid loading process

- As the machine approaches its full capacity, the software will notify the operator that the machine must be emptied
- Operator opens the machine using a key
- Operator removes the bag or roll cage filled with soiled items
- Operator replaces bag with new empty bag roll cage
- Operator closes and locks the door



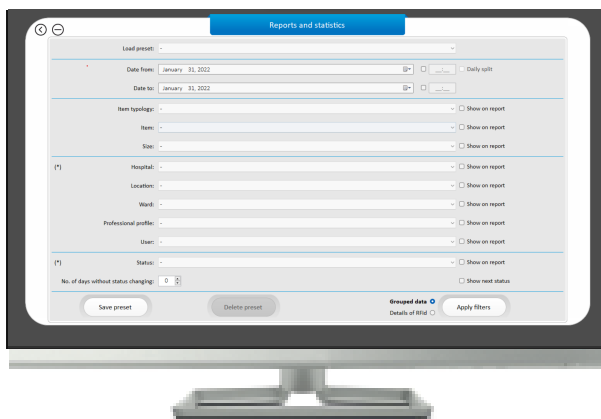
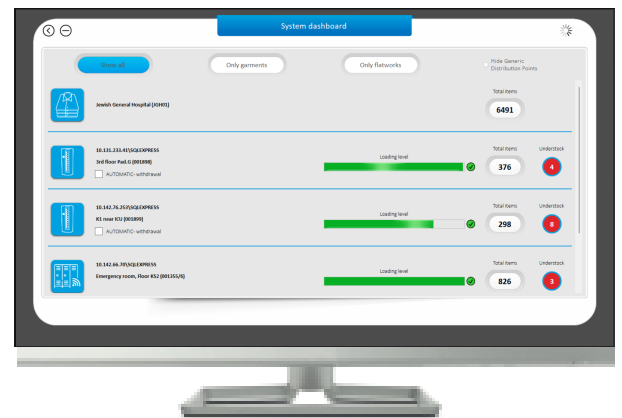


ONE is the software that interacts with all ABG machines. ONE has 4 main interfaces:

### System Dashboard

The system dashboard interface is where the system administrator will have a birds-eye-view of the inventory in each machine installed at the hospital. Through the dashboard, the administrator will be able to:

- Monitor inventory levels in all machines in progress bar format
- View complete list of items stocked in each machine
- View how many of each item are currently understocked
- Generate a picking list indicating the quantities of each item that must be restocked in each machine to return to optimal inventory level



### Reporting Tool

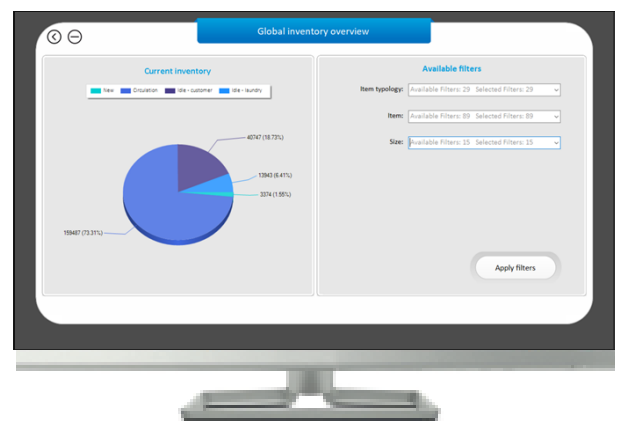
Through the reporting tool, administrators have the ability to create de-tailed customized reports based on the data they wish to analyze. Some reporting features include:

- View the usage history of any particular item through its RFID code
- Choose from an array of different filters to customize the report to your needs
- Save custom report as preset if it is frequently used
- Export data to excel or print report directly from ONE

### Global Inventory Overview

The global inventory overview feature allows managers to visualize the real-time status of all inventory. Gain instant insight into what's in circulation, available to be injected into circulation, and what's gone missing.

- Track inventory statuses
- Monitor KPI's
- Filter by item and size
- Generate purchase lists



### Operations Management

Use the Operations Management interface to assign scrubs to different stages of the logistic process (requires RFID reading device)

- Track scrubs and other textiles as they are sent to wards
- Track shipment to and from laundry
- Assign scrubs to users manually using an RFID reader
- Conduct stockroom inventory count

### WHITE C - Available Models

ITEM CODE	CAPACITY	ITEM CAPACITY
WHITE C 120	120 slots	240 items
WHITE C 170	170 slots	340 items
WHITE C 180	180 slots	360 items
WHITE C 190	190 slots	380 items
WHITE C 340	340 slots	680 items
WHITE C 360	360 slots	720 items
WHITE C 380	380 slots	760 items
WHITE C 400	400 slots	800 items

### WHITE BOX - Available Models

ITEM CODE	CAPACITY	SET CAPACITY
WHITE Box 1-door	120 items	60 sets
WHITE Box 2-doors	240 items	120 sets
WHITE Box 3-doors	360 items	180 sets
WHITE Box 4-doors	480 items	240 sets
WHITE Box 5-doors	600 items	300 sets
WHITE Box 6-doors	720 items	360 sets

**Note:** Any door can be configured as a soiled receiver. Each soiled receiving door has a 100 item (50 set) capacity

### WHITE BASKET - Available Models

ITEM CODE	CAPACITY	SET CAPACITY
WHITE Basket Gravity Compact	170 items	85 sets
WHITE Basket Gravity Large	300 items	150 sets